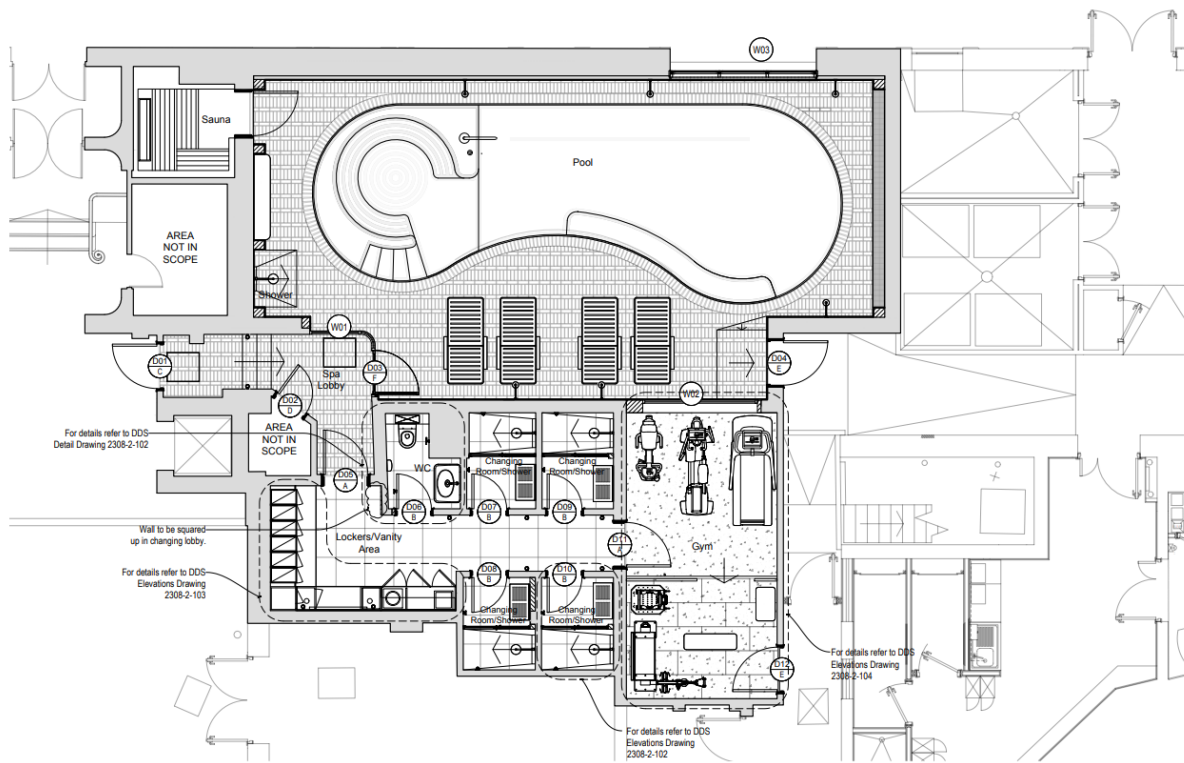
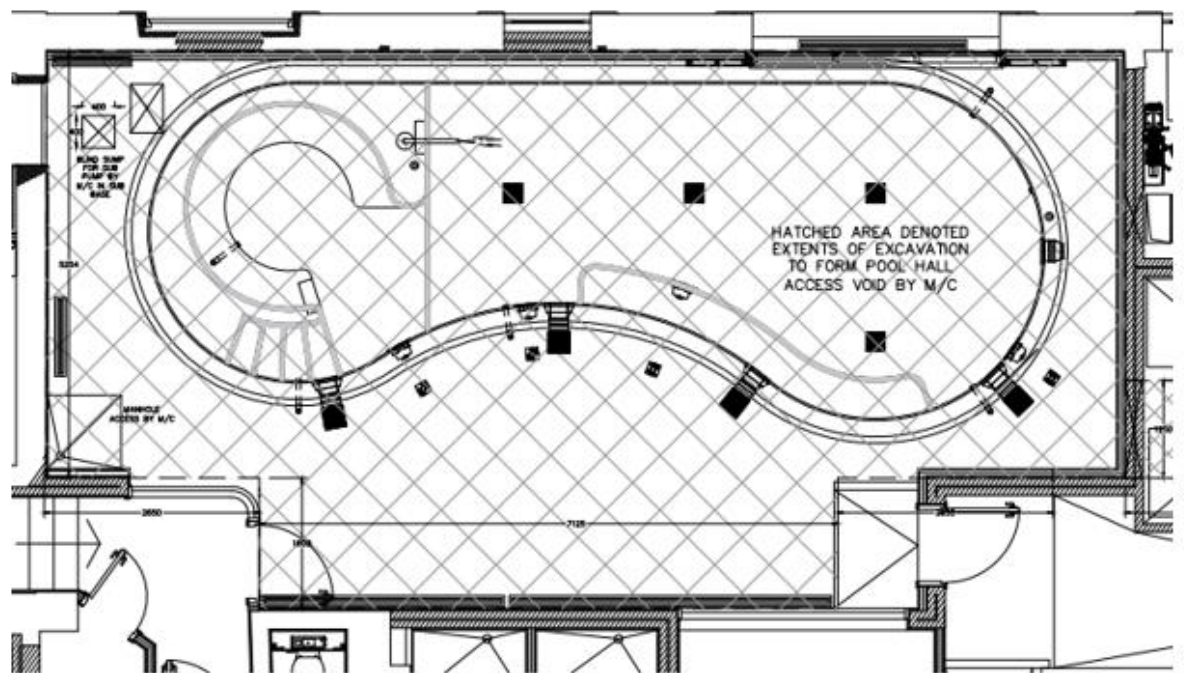


The map shows the White Hart Hotel in York, highlighted in red. It is situated on the corner of Gordon Road and Minster Yard. To the west of the hotel is St Mary Church and a lodge. To the south is the Exchequer Gate and the Exchequer Arch. The map also shows the River Ouse and the Minster Yard. Various numbered plots and distances are indicated.

Site location plan



Proposed layout



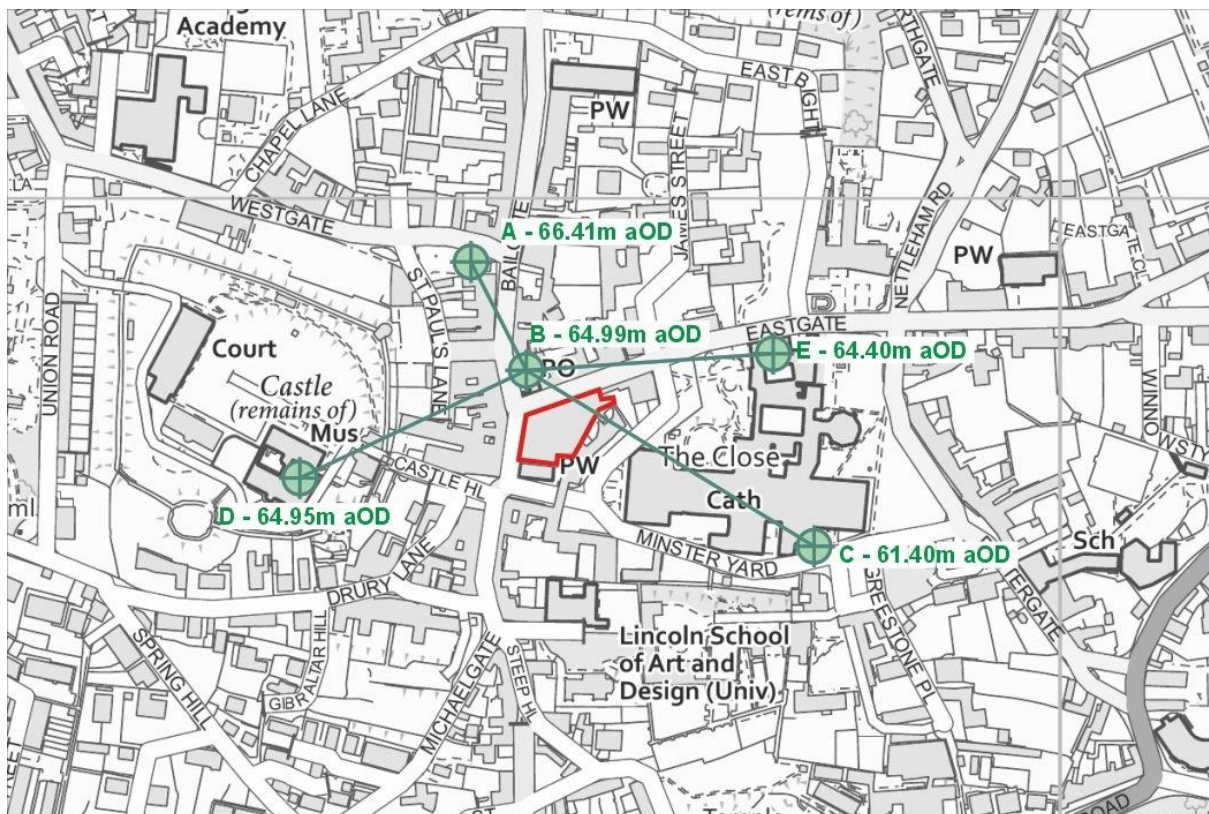
Pool layout



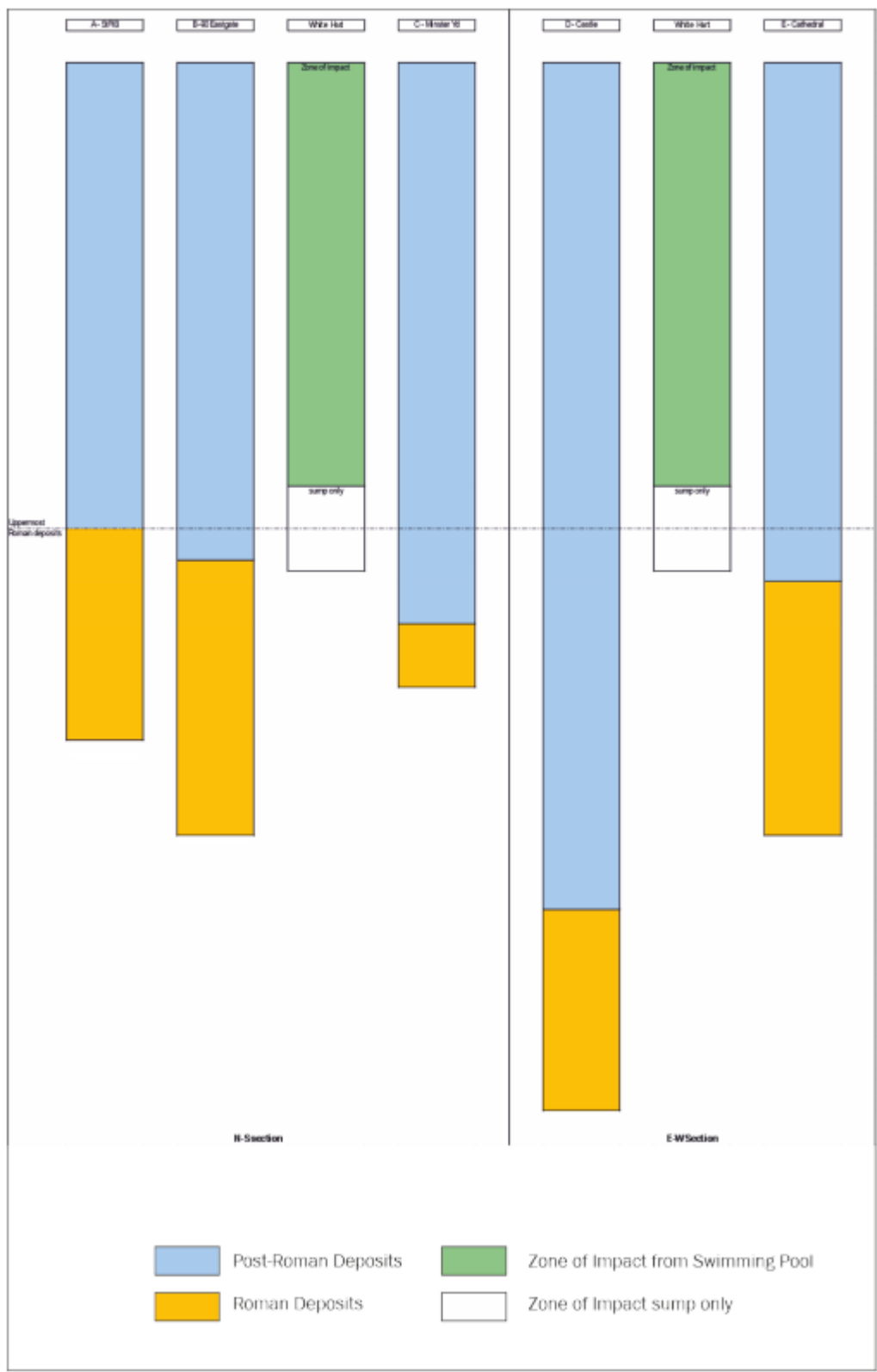
Pool cross sections



Approximate location of pool circled in red. Red shading indicates scheduled ancient monuments in the area with listed buildings marked in blue.



Location of sites referenced on comparative deposit model



Comparative deposit model with ground level zeroed for all sites



Photograph from Eastgate

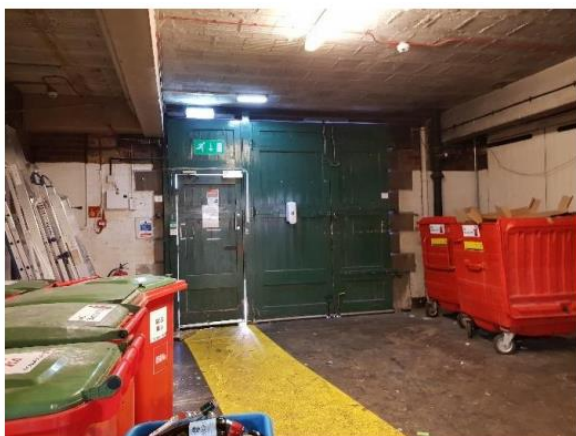


Figure 40 Looking north (L) and northeast (R) within the service area at the northeast corner of the hotel within the c.1938 addition. The large green gates provide access to Eastgate through the archway. This is part of the proposed location of the eastern end of the swimming pool.

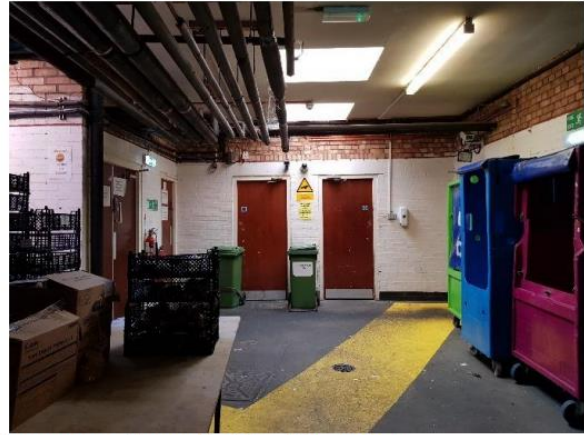


Figure 41 Looking east (L) and south (R) within the service area on the north side of the hotel.



Figure 42 Looking northwest (L) and southeast (R) along the service corridors at ground floor level.